

SMART FEEDER™



LIVESTOCK FEEDING / COST ACCOUNTING

If You're Missing An Opportunity To Save Money, Smart Feeder Will Find It!

Steve Litwiller made a change in his swine feeding program that's saving him over \$20,000 a year. Doug Pohlman adjusted his protein percentage and got faster-gaining hogs off to market in shorter time. What guided their decisions? The grow-finish records of Smart Feeder—FBS's system for feed and livestock inventory con-

trol and production cost analysis. One 7,500 sow operation trims two weeks off its computer schedule by integrating Smart Feeder and the FBS accounting system, TransAction Plus. So many ways to improve efficiency and lower costs!

Smart Feeder and *Only* Smart Feeder Has Everything You Need To Control Production Costs The Easy Way

No other system gives you all this!

- ◆ *Accurate analysis of all production costs—feed, non-feed, overhead*
 - ◆ *Automatic import of feed tickets from commercial and electronic feed mills*
 - ◆ *Combined cutout and financial performance in group closeouts PLUS ...*
- Perpetual feed, livestock and drug inventories
 - Analysis by stage, center, group, location, etc.
 - Feed reports by ingredient, ration or ticket
 - Multi-year, linked planning modules with growth and feeding curves
 - Handles both continuous-flow and group feeding
 - "User tolerant" record system allows easy editing without sacrificing accuracy
 - Works with pork, beef, dairy or poultry
 - Feed by ration, ticket, batch or buy-and-dispense feed
 - Instantly exports to spreadsheets and graphs
 - Feed budgets and delivery schedules (optional)
 - Full Cost Analysis by group, farm, stage
 - Integrates seamlessly with management accounting
 - Downloads 34 feed mill formats
 - Imports 15 packer/processor plant formats

Even Greater Power, Flexibility, Simplicity in Version 11

The capacity to do *more*. The ability to adapt to *your* needs. The speed and operating ease to get the job done *fast*. These traits have always set Smart Feeder apart ... made it unbeatable! Now, new Version 11 moves the system a notch higher:

- Veterinary Feed Directives attach to groups
- Option of FIFO or weighted average input inventories
- "Drill-down" to group setup from any group report
- Group work schedules
- Electronically imports treatments, death loss and movements
- Graphing added to Open and Closed Group Reports
- Maintains USDA Premises ID by location
- Tracks drug withdrawal interval
- Tracks group feeding performance across stages
- Integrates with *E.CLIPSE* management accounting



*Smart Feeder links automatically with the optional cloud-based **Pork Profit Center Dashboard** for instant access by your production staff to sales, inventory and performance analysis.*



Integration — the easiest route to a sure handle on production costs

Do you know your exact cost of raising crops or livestock? If not, you could be losing a fortune in needless expenses.

Perhaps you do have some fix on these costs, but ask yourself: Do I always get the data in time to be helpful? Can I count on the accuracy? How many different programs am I using to get these numbers?

There's a simple solution: Integrated production-financial record-keeping, in which component modules share information. The key benefit is a cost-accounting capability that gives you complete, precise information the instant you need it. The only thing better is a full-time staff of accountants on your farm.

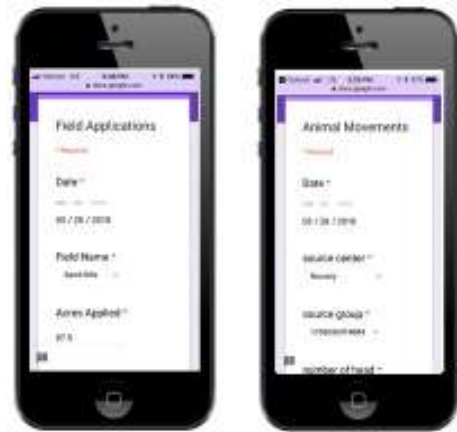
Yet you needn't be an accountant to run an integrated system. It's easier than you think. For example, interlinked modules function seamlessly as one unit. You only have to enter data one time. If you're operating three separate programs stand-alone, you know the advantage here. Just one time-saving convenience among a score of others.

Now, where to turn for a fully integrated management information system? We pioneered the concept 30 years ago and have taken it to levels that may never be matched.

"What it comes down to for us is that we're a family operation. We all have a thousand things we're doing every day. We need to maximize the use of our time.

Having our production records and our accounting all integrated together allows us to spend more time to doing things and less time fiddling around doing busy work. We're able to do what we need to do and still have the data we need to make production decisions."

Mike Paustian, Ph.D.
Paustian Enterprises, Walcott, Iowa



The optional FBS Import Module will import feed, death loss, movements and treatment records from Google forms, Excel or CSV files into Smart Feeder.

Others sell you software. We offer you SERVware™.

There's a difference. The software you choose to help run your farm should be thought of not as a product, but a service. True business software represents the service discipline in much the same manner as a records manager. Accountant. Financial analyst. Even an executive consultant. These are professionals you engage to enhance your management skills, minimize your production costs and build your bottom line.

Sometimes this vital aide on a paper-thin disk needs the backing of able, responsive training and support. Again, we're talking service. SERVware from FBS. Unlike ordinary software, it's service, all service, from the beginning.

So, if you judge farm software solely on price, you may be settling for a mere product—like an item bought at a discount store—ignoring the singular quality that distinguishes the right choice. Service.

But don't take our word for it. Talk to our clients.



"We are using the FBS business software and have it integrated into our production records. We stream most information—feeding, billing, weights and slaughter data—into it electronically giving us a good database that flows out to many, many reports and spreadsheets. This gives us analysis to predict market weights, marketings, cash flow and potential feed use for hedging. We link a lot of data together so we can make good decisions and planning. It also helps with financing."

Bob Dykhuis, Dykhuis Farms, Holland, Michigan

Among the most popular Smart Feeder options are modules that automatically download feed tickets from 34 commercial and on-farm feed mills and 15 packer/processors.

Why Smarter Feeder? Because Feed Is Two-Thirds Of Your Cost of Gain.

If feed costs are this critical, so are feed records that are complete and accurate. Smart Feeder lets you do precision tracking of reconciled perpetual inventories of feed and livestock. These records are far more thorough and precise than any produced in a piecemeal fashion.

Smart Feeder also makes these jobs simpler. Compared to other systems, fewer entries are required in the areas of feed and livestock purchases and livestock sales. And the information is always up to date.

Less time. Less work. Less margin for error.

Smart Feeder Has The Numbers To Fit Your Numbers.

Smart Feeder is geared to handle size. Today's size. Tomorrow's size. These capacities assure you room for future growth:

- 1,000 centers/farms/classes of livestock
- 800 pens, buildings or locations
- 2,000 active feeding groups (unlimited inactive groups)
- Two unlimited user-defined categories (group/pen/room/sex/ breed, etc.)
- 60 different treatments with repeat dates
- 60 death loss causes
- 200 drugs or vaccines
- 1,500 rations and 1,500 ingredients

"With Smart Feeder we've been able to pinpoint problems in different growth phases—nursery to grow-finish. In one instance, a change in percent of protein got us more pounds of pork out of each phase, resulting in fewer days to market."

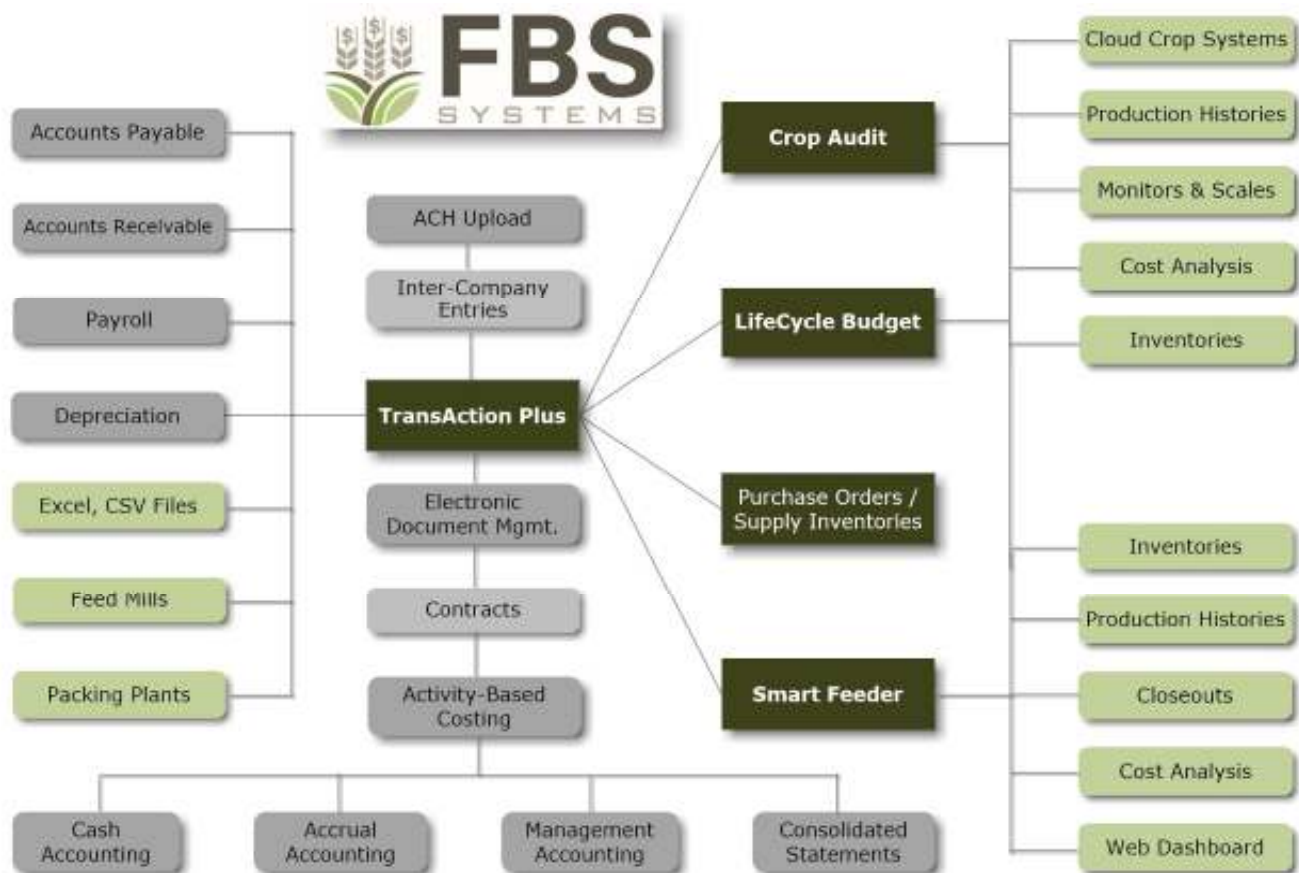
Doug Pohlman, Lake Park, Iowa

"The most important number I need to know is the cost of feed for a pig. Because FBS integrates with my financials when I pay the bills I absolutely know my feed costs are exact."

Scott Phillips, Phillips Family Farms, Drexel, Missouri

Don't Stop With Smart Feeder ... Integrate With TransAction Plus™ And You Can Monitor Profitability.

*You're operating Smart Feeder now and getting those great cost analyses you've needed for so long. Now you're ready to track the most important (and elusive) statistic of all—**profitability**. You do this easily by linking Smart Feeder with FBS's widely used accounting system, TransAction Plus (feed, livestock purchases and sales and expense entries) and E.CLIPSE management account for overhead allocations and work in process adjustments.*



(BFH18) Change Rate of Gain Table

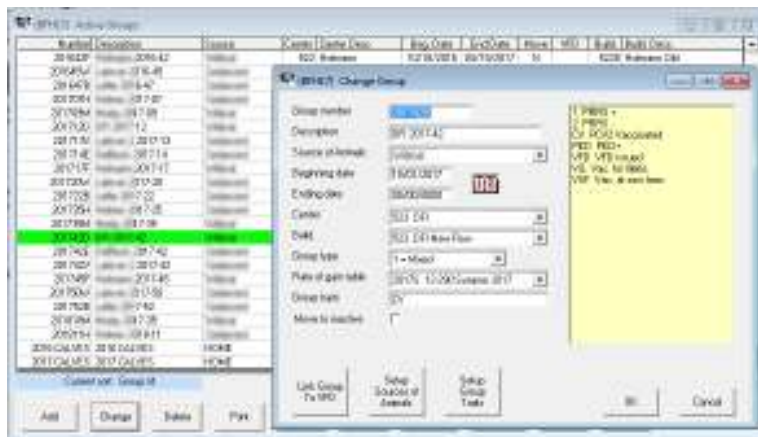
Number: 20175
Description: 12:290 Summer 2017 Active Table

Phase	Starting Weight	ADG	Days in Period	Gain/Animal	Feed of Feed	Pounds of Feed	Ration	Load	Sales Days	Sales Percent
1	12	0.10	1	0.10	7.10	0.71	N1111 UC #1 12 #	1	-32	7.50
2		1.33	3	4.00	1.00	4.00	N2112 UC #2 12-16 lbs	2	-24	11.00
3		1.20	5	6.00	1.17	7.00	N3113 UC #3 16-22 lbs	3	-19	15.50
4		1.33	6	8.00	1.75	14.00	N4114 UC #4 22-40 lbs	4	-14	17.50
5		1.42	12	17.00	1.76	30.00	N5115 UC #5 30-47 lbs	5	-9	15.50
6		1.42	12	17.04	1.76	30.00	01RF17 F1RFAT17 47-64 lbs	6	0	33.00
7		1.90	16	24.00	1.75	42.00	02RF17 F2RFAT17 64-88 lbs			
8		1.60	20	32.00	1.91	61.00	03RF17 F3RFAT17 88-120 lbs			
9		1.60	25	40.00	1.93	77.00	04RF17 F4RFAT17 120-160 lb			
10		1.74	23	40.00	2.35	94.00	05RF17 F5RFAT17 160-200 lb			
11		1.83	30	54.90	2.84	156.00	06RF17 F6RFAT17 200-255 lb			
12		1.75	20	35.00	3.63	127.00	07RF17 F7RFAT17 255-280			
13										
14										
15										
16										
								Total	100.00	

Ending weight: 290
Days on feed: 173

OK Cancel

Sales spread: days (+/-) from total rate of gain days (173)



Customizable Rate of Gain Tables permit up to 32 ration changes as well as sales spread assumptions.

Exclusive Group Tracking system tracks source, health status, Veterinary Feeding Directives and ties to accounting data.

Integrated, "drill-down" reports.

Mortality from production records.

(NPC00) Feeding General Edit

Line	Entry Type	Date	Ent	Build	Group	Cause	Number	Ave Wt	Weight	
1	06/17	7/1999	133	59	7,804	68.17	5,320.00	GROWER #1	LEFLER B2	199928

Save Cancel Add Entries

(NPC00) Feeding General Edit

Line	Entry Type	Date	Ent	Build	Group	Cause	Number	Ave Wt	Weight	
1	Death Loss	11/24	7/1999	133	#1	LEFLER B2	199928	PNEUMONIA	1	220

Save Cancel Add Entries

Movements from production records.

(NPC00) Change Deposit

Bank Account: AMCORE BANK
Deposit Number: 2828
Date: 12/10/1999
From: HOG INC. (FARMLAND)
Total Amount: 9,597.70
Amt. to Balance: 0.00

Line	Acct	Ent	PC	Amount	Description	Quantity	Weight	Build	Group
1	510	510	5	3,704.07	199928	100.000	26,955.000	502	199928
2	311	510	5	983.78	199928	100.000	26,955.000	502	199928
3	318	510	5	-235.26	199928	100.000	26,955.000	502	199928
4	317	510	5	0.00	199928	100.000	1,000	502	199928
5	315	510	5	0.00	199928	100.000	74,600	502	199928
6	316	510	5	0.00	199928	100.000		502	199928
7	319	510	5	0.00	199928	100.000	47,400	502	199928
8	800	510	5	121.30	199928	100.000		502	199928
9	825	510	5	40.00	199928	100.000		502	199928
10	800	510	5	49.26	199928	100.000		502	199928
11	824	510	5	44.33	199928	100.000		502	199928

310 Hog Sales 510 GROWER #1 5 PORK DIVISION

Save Cancel Insert Line Delete Line

Group Report

	No.	Ent. Desc	Group	Reg. Inv.	Moved In	Purchased	Died	Moved Out	Sold	Ending Inv.
B2	510	GROWER #1		0						0
B2	510	GROWER #1	199928		96					96
B2	510	GROWER #1	199928		133					229
B2	510	GROWER #1	199928				1			228
B2	510	GROWER #1	199928				1			227
B2	510	GROWER #1	199928				1			226
B2	510	GROWER #1	199928				1			225
B2	510	GROWER #1	199928						66	159
B2	510	GROWER #1	199928						33	126
B2	510	GROWER #1	199928						100	26
B2	510	GROWER #1	199928						26	0
B2	510	GROWER #1	199946		140					140
B2	510	GROWER #1	199946		57					197
B2	510	GROWER #1	199946		13					210
B2	510	GROWER #1	199928	0	439	0	4	0	225	210

Purchases and sales from accounting records

Smart Feeder Version 11.4 \$2,706*/ \$740**

4 GB of memory and Windows 10/Server 2012 required.

User-Defined Reports \$1,078*/ \$327**

Adds up to 20 custom reports with hundreds of options for closeouts and carcass traits; copies instantly to spreadsheets.

Group Input/Tracking System \$1,078*/\$327**

Facilitates group coding in TransAction Plus and Smart Feeder; includes "open" and "closed" group reports.

On-Farm Feed Mill Interface \$2,706*/ \$814**

Works with 11 major electronic mill software/controllers.

Commercial Feed Mill Interface \$2,706/ \$814**

Automates feed accounting for 23 feed mill formats. TransAction Plus and Accounts Payable required.

Feed Sales Module \$2,706*/ \$814**

For selling feed to internal entities or retail sales. TransAction Plus and Accounts Receivable required.

Packer Interface \$1,802*/ \$540**

Downloads kill sheet, carcass traits and weight breaks from 15 packer-processors formats. TransAction Plus required.

Feed Budget/Delivery Report \$1,802*/ \$540**

Generates and monitors real-time feed budgets by group and scheduled feed deliveries.

Group Monitor Report \$1,802*/ \$540**

Tracks death loss, feed consumption and animal growth by week or day.

Import/Export Module \$2,706*/ \$585**

Imports feeding, movements, mortality and drug treatments from Excel, text or CSV files.

LifeCycle Budget \$1,802*/ \$814**

System-wide cash flow/animal flow projections.

Profit Center Dashboard \$362 / month

Web-based graphical reporting.]

E.CLIPSE Management Accounting \$6,317*/ \$1,897**

Uses Activity Based Costing to allocate overhead costs and maintain location /group costs and financial statements. TransAction Plus required.

* On premise license **Cloud annual subscription

The complete Smart Feeder System generates 27 production, inventory and financial analysis reports.

	ACTUAL VALUE	ACTUAL PER CWT	ACTUAL PER HEAD	DIVISOR CWT	DIVISOR HEAD
NET SALES					
Market Hog Sales	6,958,523.97	55.62	160.15	125,118.00	43,450
Sort Adjustment	71,222.89	0.58	1.68	121,750.30	42,271
Hedging Gain/Loss	204,123.99	1.60	4.59	127,398.60	44,428
Low Value Hogs	25,876.66	53.82	152.22	480.81	170
No Value Hogs	34,304.65	23.42	49.57	1,464.92	692
Dead On Arrival	18,742.63	55.97	161.57	334.86	116
Freight & Trucking	-131,907.41	-1.04	-2.97	127,398.60	44,428
Insurance	-32,543.50	-0.26	-0.73	127,398.60	44,428
Marketing Sales Exp.	-35,496.11	-0.28	-0.80	127,398.60	44,428
Futures Commissions	-121,165.78	-0.95	-2.73	127,398.60	44,428
Options Premiums	174,583.75	1.37	3.93	127,398.60	44,428
Interest & Dividends	47,716.00	0.37	1.07	127,398.60	44,428
Total NET SALES	7,213,981.74	56.63	162.37	127,398.60	44,428
COST OF SALES					
Purchased Pigs	2,027,973.87	330.31	39.58	6,139.64	51,232
Inv. Adjustment	-192,091.63	-1.51	-4.32	127,398.60	44,428
Total COST OF SALES	1,835,882.24	14.41	41.32	127,398.60	44,428

FEED	
Com-Energy	1,401,170.43
Protein	1,000,432.72
Base Mix/Other	318,678.58
Complete	180,229.07
Medication	67,198.50
Feed GMO	230,467.47
Feed Adjustment	-84,384.48
Feed Hedge	-105,442.51
Total FEED	2,967,345.78
OTHER DIRECT COSTS	
Drugs/Medication	103,130.55
Drug Adjustment	-7,801.47
Direct Labor	8,404.58
Total OTHER DIRECT COSTS	103,733.66
DIRECT PROFIT	2,287,016.06
SUPPORT OPERATIONS	
Facilities	1,010,653.17
Finisher Supervision	107,048.50
Allocated Vet. Serv.	11,918.11
General Pk	
Total SUPPORT O	
PRODUCTION MA	
COST OF PRODUCT	
G & A	
OPERATING PROF	
Finance	
NET INCOME	

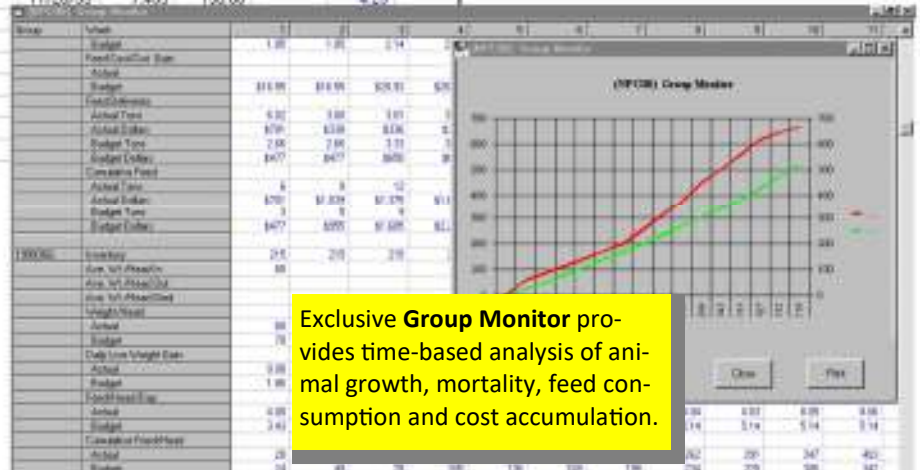
Industry standard Cost Analysis integrate production units with accounting and including overhead costs.

	540	540	540	540	540	540	TOTALS
	199942G	199962G	200002G	200004G	200006G	200007G	
Total Sales							
Quantity	207	209	219	210	201	204	2,102
Total Weight	52,419	53,085	56,095	53,285	50,655	51,280	538,989
Average Weight	253	254	256	254	252	251	256
Price/CWT	40.95	43.83	47.91	48.14	50.15	49.77	44.47
Price/Head	103.70	126.57	122.71	122.15	126.39	125.12	114.02
PERFORMANCE							
Avg. Days on Feed	111	108	112	114	113	107	111
Min. Days on Feed	100	98	94	107	99	100	92
Max. Days on Feed	112	115	114	115	113	113	115
Min. Weight Out	243	244	250	175	242	165	130
Max. Weight Out	264	261	259	262	263	259	275
ADG	1.67	1.77	1.72	1.68	1.67	1.79	1.76
Death Loss Quant.	4	6	5	8	9	2	45
% Death Loss	1.90	2.78	2.33	3.67	4.38	0.97	2.10
FEED							
Total Pounds Fed	134,765	134,765	134,765	134,765	134,765	134,765	1,300
Feed Per Head	651.04	651.04	651.04	651.04	651.04	651.04	61.27
Feed/Lb Produced	3.53	3.53	3.53	3.53	3.53	3.53	3.26
\$/CWT Feed	5.67	5.67	5.67	5.67	5.67	5.67	5.94
\$/Ton Feed Only	96.66	96.66	96.66	96.66	96.66	96.66	91.20
\$/Ton W/Gain/Mix	113.49	113.49	113.49	113.49	113.49	113.49	8.73
\$/CWT Produced	20.06	20.06	20.06	20.06	20.06	20.06	19.36
\$/Head Out	36.94	32.75	38.18	37.74	38.12	39.59	37.48
Feed/Head/Day	5.89	5.06	5.69	5.22	5.44	5.93	5.75

User-Defined closeout reports combine production, carcass and accounting measurements (over 800 options!) and can be sorted by stage, farm, animal type and performance measurements. As with all Smart Feeder reports you can instantly copy it to Excel.

Group Id	Phase	Ration	Description	Budget Amount	Actual Amount	Order Date	Delivery Date	Pig Desc	Budget Feed/Hd	Actual Feed/Hd	Budget F/H/D	Actual F/H/D
199940G	1	4010	G 19 40/100	11,928			11/03/99	3 408	56 00		3 50	
	1	4010	G 19 40/100		6,024		11/03/99	1 917		28 28		3 14
	1	4010	G 19 40/100		6,024		11/10/99	6 23		28 28		3 43
	1		PHASE TOTALS	11,928	12,048			2,556	56 00	56 56	3 50	4 71
	2	4020	G 17 5 100/150	31,950			11/26/99	7 455	150 00		4 28	
	2	4020	G 17 5 100/150		6,008							
	2	4020	G 17 5 100/150		6,003							
	2	4020	G 17 5 100/150		6,003							
	2	4020	G 17 5 100/150		6,003							
	2	4020	G 17 5 100/150		6,003							
	2		PHASE TOTALS	31,950	30,020							

Optional Feed Budget verifies that the correct ration is delivered to the correct location at the correct time..



Exclusive Group Monitor provides time-based analysis of animal growth, mortality, feed consumption and cost accumulation.

(BFH18) Death Loss by Week

Producer	Date	Group	Cause of Death	Floor	Head	Wt.	1	2	3	4	5	6	7	8	
Buffalo Prairie	03/29/2017	201713V	EUTHANIZED	548	2,441	13.10	0	0	4	0	1	2	0	0	
			CRIPPLED				0	2	0	0	0	0	0	0	
			UNKNOWN				0	0	0	1	1	0	0	0	
			E. COLI				0	0	0	0	0	0	0	0	
			BELLY BUST				0	0	0	0	0	0	0	0	
			Other Causes				0	0	0	0	0	0	0	0	
			Group Totals				0	2	4	1	2	2	0	0	
Buffalo Prairie	10/20/2017	201742V	STRESS	548	2,443	11.41	0	0	0	0	0	8	6	-	
			INVENTORY ADJUST.				0	0	0	0	0	2	8	-	
			Group Totals				0	0	0	0	0	10	14	-	
Floor Totals							4,884	12,26	0	2	4	1	2	14	0
Producer Totals							4,884	12,26	0	2	4	1	2	14	0
Percent Per Week							0.00	0.04	0.08	0.02	0.04	0.25	0.29	0.00	
Grand Totals			DL% Open Grp:	0.40	51,232	11.98	0	3	7	18	26	37	53	41	
Percent Per Week			DL% Closed Grp:	2.68			0.00	0.01	0.01	0.04	0.05	0.07	0.10	0.08	

OFFICE USE REPORT: Reporting Costs

Category	2017	2018	2019	2020	2021	2022	2023	2024	2025	2026	2027	2028	2029	2030
SALES														
SALE OF BIRD STOCK	2.55	2.03	1.70	2.46	3.46	1.91	6.13	3.28	2.17	3.88	1.92	3.82		
INTERNAL PIG SALES	35.04	35.17	44.94	31.28	34.58	34.61	39.07	30.25	28.01	34.45	34.69	35.47		
Total SALES	37.59	37.20	46.64	33.74	38.04	36.52	45.20	33.52	30.18	38.33	36.61	39.29		
PIG COST														
Total PIG COST	0.00	0.00	0.00	0.00	0.00	0.00	0.00	0.00	0.00	0.00	0.00	0.00		
FEED COSTS														
FEED	11.82	12.80	13.84	11.87	11.88	10.08	10.33	11.63	13.17	10.87	12.29	12.00		
FEEDABLES	0.99	1.25	1.17	1.10	1.11	0.92	1.00	0.94	1.07	0.95	1.08	1.05		
FAL. PIV INV. ADJ.	-0.20	-0.45	-0.25	0.46	0.25	0.31	0.95	-1.07	-1.04	-0.25	0.25	-0.24		
Total FEED COSTS	12.40	14.60	14.80	13.43	14.09	11.31	12.32	11.50	13.19	11.67	13.42	13.81		
OTHER PROD COSTS														
BREEDING USE - AID	4.48	3.49	8.21	6.62	3.38	6.28	10.89	-0.44	6.00	4.89	3.43	6.72		
VACCINE - DIRECT	0.29	0.20	0.80	0.39	0.83	0.53	0.67	-0.02	0.08	0.61	0.82	0.44		
VACCINE - INVENTORY	4.34	3.45	4.77	4.28	4.28	1.85	4.02	3.75	3.38	4.08	3.08	4.52		
OTHER SERVICES-SHOPS, ETC	0.30	0.27	0.00	0.00	0.00	0.00	0.00	0.00	0.00	0.00	0.00	0.00		
AI SEMEN	0.75	0.99	0.70	0.73	0.83	0.79	0.63	0.71	0.76	0.74	0.79	0.78		
SANITATION	0.90	0.00	0.00	0.00	0.00	0.00	0.00	0.00	0.00	0.00	0.00	0.00		
NET FEE	0.21	0.00	0.00	0.01	0.81	0.07	0.00	0.00	0.04	0.01	0.05	0.01		
BROWER FEE NOW	13.83	14.76	0.00	0.00	14.42	14.28	15.06	14.13	14.23	0.00	0.00	1.61		
FACILITY ASSIGNMENT	0.00	0.00	19.88	9.96	0.00	0.00	0.00	0.00	0.00	12.28	9.88	9.26		
BREEDING SERV ASSIGN	-0.21	0.05	0.01	0.04	0.02	0.00	0.08	-0.05	-0.05	0.01	0.02	0.02		
COMPUTER SUPPLIES	0.00	0.00	0.00	0.00	0.00	0.00	0.00	0.00	0.00	0.00	0.00	0.00		
FREIGHT EXPENSE	0.24	0.69	0.09	0.17	0.45	1.00	1.48	0.00	0.18	0.20	0.28	0.30		
LIVE HALL ASSIGNMENT	0.00	0.00	0.00	0.00	0.00	0.00	0.00	0.00	0.00	0.00	0.00	0.00		
GENERAL FARM	0.78	0.73	1.61	1.02	0.99	0.62	0.52	0.18	1.11	0.89	0.81	0.69		
PIG FEE-OTHER	0.50	0.20	0.00	0.00	0.50	0.00	0.00	0.00	0.00	0.00	0.00	0.00		
Total OTHER PROD COSTS	24.75	24.75	34.40	29.54	34.50	31.44	36.63	30.54	25.70	30.60	28.95	31.54		
WEAN PIG COST	37.15	39.35	46.44	33.92	38.59	37.75	43.35	29.92	38.89	35.41	38.96	37.54		

(BFH18) Closed Group Report

Group Description	Scout	No. In	No. Dead	DL%	No. Total	Wt. Total	PC	Animal Cost	Feed Cost	Drug Cost	Other Cost	Total Cost	Value	
Lot 2015-45	Cedarcreek	4,390	187	2.44	4,203	950	1,725	2.50	42.81	75.32	0.49	24.73	147.18	52.75
Total to Lot 2015-45		4,390	187	2.44	4,203	950	1,725	2.50	42.81	75.32	0.49	24.73	147.18	52.75
Deflick 2015-37	Cedarcreek	4,754	80	1.42	4,726	146	1,824	2.39	42.80	70.79	0.48	22.33	140.81	50.09
Total to Deflick		4,754	80	1.42	4,726	146	1,824	2.39	42.80	70.79	0.48	22.33	140.81	50.09
Herby 2015-26	Wildcat	2,399	40	2.80	2,398	149	1,744	2.42	41.83	71.23	2.91	28.29	121.48	46.50
Total to Herby		2,399	40	2.80	2,398	149	1,744	2.42	41.83	71.23	2.91	28.29	121.48	46.50
Holman 2015-43	Wildcat	2,896	64	2.14	2,832	70	1,883	2.33	41.77	72.98	0.38	27.75	149.27	51.70
Total to Holman		2,896	64	2.14	2,832	70	1,883	2.33	41.77	72.98	0.38	27.75	149.27	51.70
DFI 2015-28	Wildcat	2,405	41	1.70	2,362	70	1,738	2.43	41.83	74.68	0.51	24.57	144.98	51.02
Total to DFI		2,405	41	1.70	2,362	70	1,738	2.43	41.83	74.68	0.51	24.57	144.98	51.02
Holman Wood 21	Cedarcreek	2,196	34	1.56	2,152	70	1,789	2.46	42.80	71.12	2.91	24.84	125.79	44.75
Total to Holman		2,200	67	3.04	2,136	90	1,884	2.44	38.66	75.68	1.83	24.86	170.79	62.90
Total to Lot 2015-48		4,390	187	2.30	4,203	70	1,738	2.45	38.81	75.41	1.77	24.86	149.94	52.22
Total to Lot 2015-48		2,417	25	0.94	2,414	148	1,813	2.47	42.80	73.68	0.56	24.81	145.25	51.86

- **Death Loss by Week (top)** can incorporate death loss reasons plotted against weeks on feed.
- Many reports include **graphing options**.
- The **Cost Analysis Report** can compare across growers and farms.
- The **Closed and Open Group Reports** run off of "live" data.
- Smart Feeder includes complete and precise animal, feed and drug **inventories** tightly integrated with production and accounting data.

(BFH18) Drug Inventory

No. Drug	Type	Date	No. Center	No. Build	Quantity	Units	Price/Unit	Value	Inventory
84Y100	Baytal 100 injectab	Inventory	11/01/2017		1,800.00	DOSE	0.4310	775.80	1,800.00
84Y100	Baytal 100 injectab	Purchase	11/20/2017		24.00	801TTL	43.1000	1,034.40	4,200.00
84Y100	Baytal 100 injectab	Treat	11/07/2017	521	100.00	DOSE	0.4310	43.10	4,100.00
84Y100	Baytal 100 injectab	Treat	11/10/2017	522	100.00	DOSE	0.4310	43.10	4,000.00
84Y100	Baytal 100 injectab	Treat	11/15/2017	523	200.00	DOSE	0.4310	86.20	3,800.00
84Y100	Baytal 100 injectab	Treat	11/15/2017	521	200.00	DOSE	0.4310	86.20	3,700.00
84Y100	Baytal 100 injectab	Treat	11/18/2017	520	200.00	DOSE	0.4310	86.20	3,500.00
84Y100	Baytal 100 injectab	Treat	11/20/2017	523	200.00	DOSE	0.4310	86.20	3,300.00
84Y100	Baytal 100 injectab	Treat	11/20/2017	521	200.00	DOSE	0.4310	86.20	3,100.00
84Y100	Baytal 100 injectab	Treat	11/23/2017	540	300.00	DOSE	0.4310	129.30	2,800.00
84Y100	Baytal 100 injectab	Treat	11/27/2017	522	600.00	DOSE	0.4310	258.60	2,200.00
84Y100	Baytal 100 injectab	Beginning Inventory			1,800.00	DOSE	0.4310	775.80	
84Y100	Baytal 100 injectab	Purchases			24.00	801TTL	43.1000	1,034.40	
84Y100	Baytal 100 injectab	Total Treatments			2,000.00	DOSE	0.4310	862.00	
84Y100	Baytal 100 injectab	Net Change			400.00	DOSE		172.40	
84Y100	Baytal 100 injectab	Ending Inventory			2,200.00	DOSE	0.4310	948.20	



Turbocharge Smart Feeder's power and reach through the

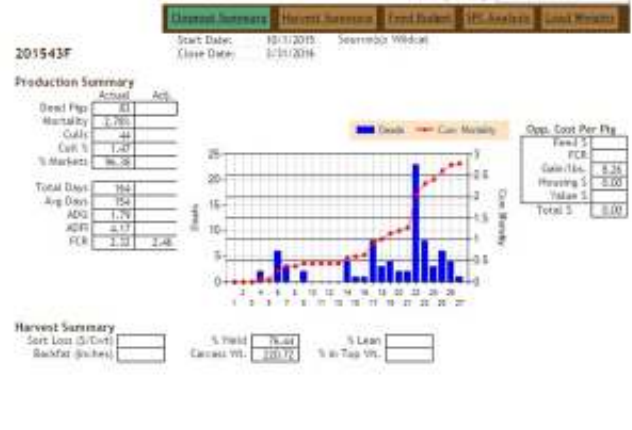


PORK PROFIT CENTER™
PERFORMANCE DASHBOARD

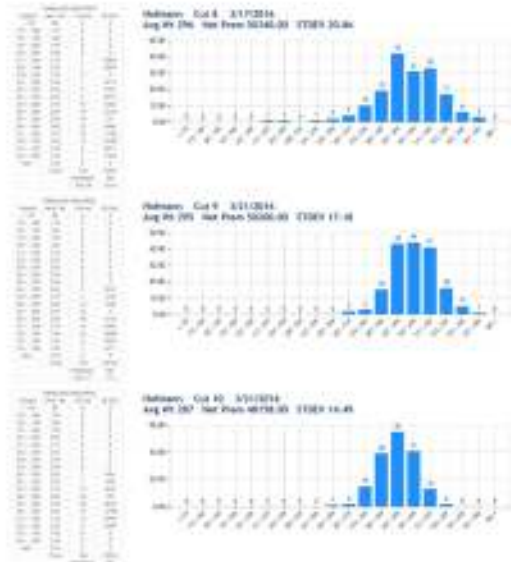
Only \$200/Month for the first two users



Real-Time Mortality



Real-Time Load Monitoring

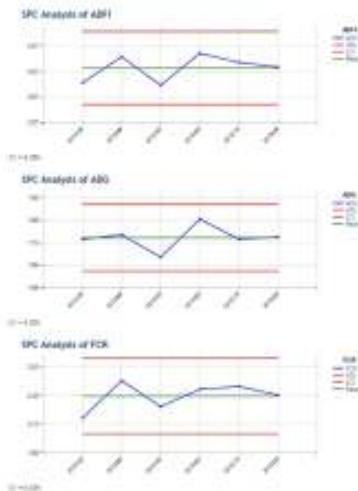


Sales Benchmarks

Load Weights -- 201543F

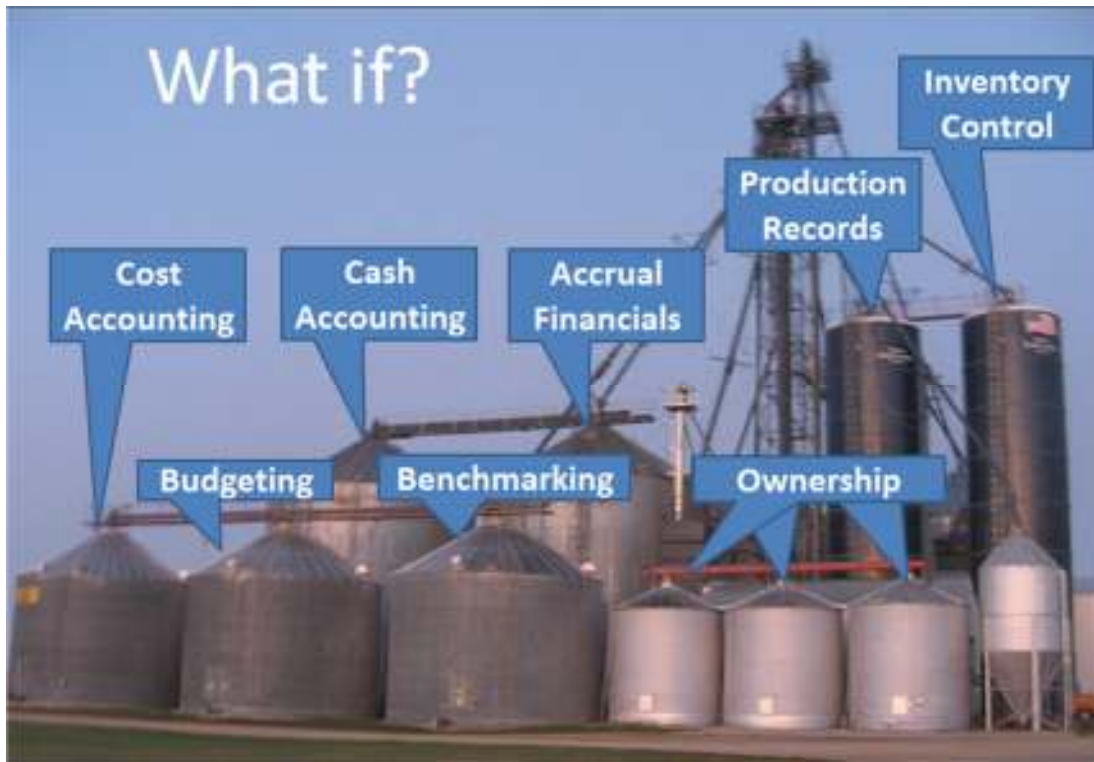


SPC Trend Analysis



Custom Reports Across Farms, Sites, Groups





Discover how to make Smart Feeder the foundation of your integrated management system. Scan the code below, visit <http://www.fbssystems.com/data-into-decisions> or call 800.437.7638.



FBS
SYSTEMS

**Box 185
601 SE 19th Ave.
Aledo, IL
800.437.7638**