



MAXIMUS

THE MAXIMUS EXPERIENCE

FBS Ag Conference
Erik Nankivil



MAXIMUS Controller - OVERVIEW



- Ventilation / Heating
- Water management
- Bin weighing
- Growth curves
- Bio-security / Chore monitoring
- Lights
- Generator monitoring
- Power consumption
- Bird/Hog weighing
- Dialer





- 1990-2008 - *Thevco* Electronics
- 2008 - *Thevco* acquired by *GSI*
- 2012 - Maximus Systems – *QMA Electronics*
 - New Approach – Modular Controller System
- 2013 - *MaxAGTech* – US Headquarters
 - Larry Reed - President
- 2014 – ESF System to the market



SIMPLE TOUCH SCREEN NAVIGATION

FEATURES

- Graph reference for settings
- Compatible with most popular hand held devices
- Very dependable hardware with 5 year warranty
- Multi room operation
- I-novarum compatible (production management solutions)
- Generates all alarms, by text or email
- Current draw & temperature readings of all variable and relay outputs
- All relays & variables have fuse protection
- Auto winching for feed & water lines
- Static pressure compensation
- Zone temperature compensation for inlets
- Outside temperature compensation for ventilation
- Bird scales • Bin scales • WiFi communication
- Diagnostic menu
- And much more...

BENEFITS

- Well-being of your animals and reduced operational costs means improved profitability for your company.
- Optimal conditions in your facilities at all times.
- Automated management of a wide range of parameters: feeding, temperature, lighting, air quality, etc.
- Perfectly safe multi-platform remote control (personal computer, smart phone, electronic tablet).
- Unmatched real-time service.
- Upgradable solution that adapts to your needs.
- Add features to your controller according to your company's evolution.
- Quick and simple Web updates ensure optimal technological solutions.
- The information you want the minute you want it.
- Improved energy efficiency.
- Guaranteed peace of mind thanks to the most reliable and safe system.
- Automation of your I-Novarum production management system data collection.



Max Ag Tech - Finisher-Demo

Erik Nankivil ▾

Refresh 30 sec. ▾

Close

Logout

Finisher-Demo



Dashboard



Barn overview



Set Point



Feed Management



Ventilation



Lights



Water Management



Herd management



Alarm management



Time clocks



Weather forecast



Notes



Chore monitoring



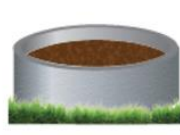
Bio security



Generator



Power Consumption



Manure management



Installation



08:27A

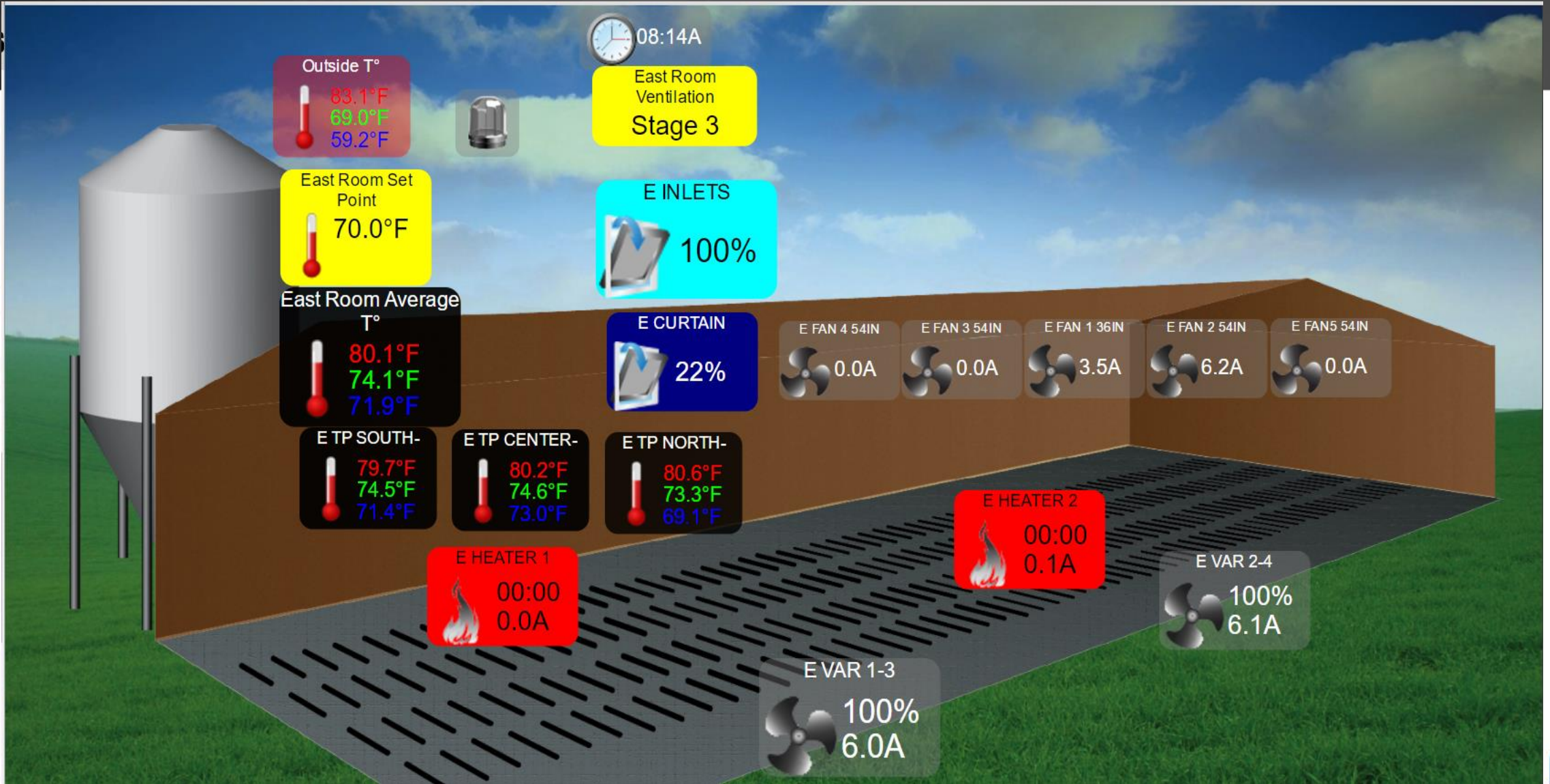
Type here to search



7:27 AM
6/23/2017



MAXIMUS



MAXIMUS Farm Controller



Brain box and Auxillary boxes

10 rooms or 100 modules per Brain



MAXIMUS

MAXIMUS Farm Controller - Interface



Chain Disk drives and Bin Scales

Farrowing Heat Zones



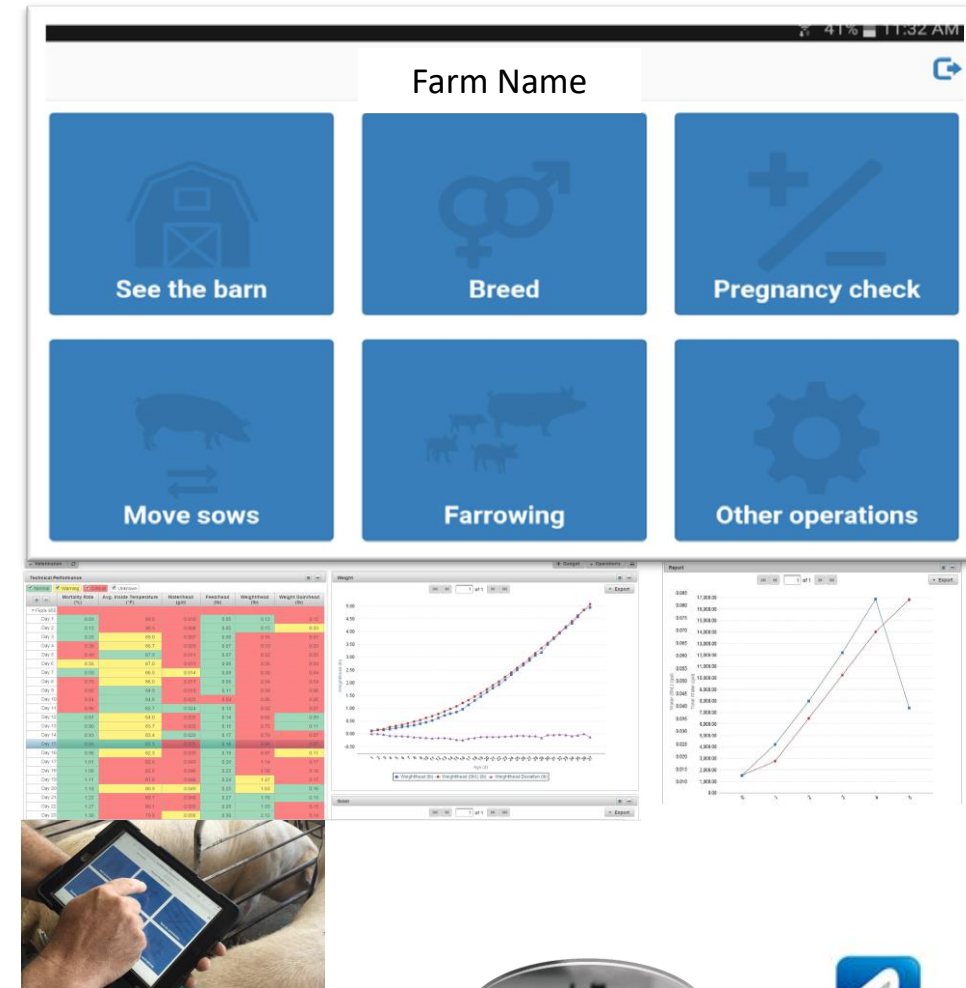
MAXIMUS

CLOUD BASED LIVESTOCK MANAGEMENT SOFTWARE



MAXIMUS
SOFTWARE

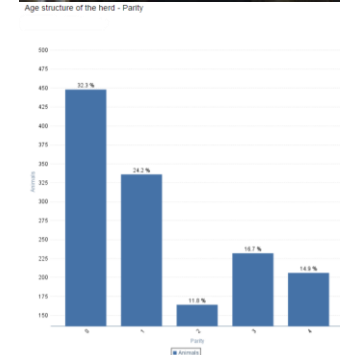
- **Cloud/Web based**
 - Accessible from anywhere in the world as long as you have Internet access
- **Hosted by Maximus**
 - No server purchase required
 - We take care of the backups, server upgrades and security
- **Multiple platforms**
 - Enter and access your data and reports on your smart phone, i-Pad, PC
- **Multiple users**
 - As many users as you want can access the program with no extra costs
- **On Demand Reporting**
 - Reports can be easily customized, scheduled, emailed, exported to multiple formats



MAXIMUS MANAGEMENT SYSTEM

A 100% INTEGRATED SOLUTION

- New paperless **user friendly** data entry
 - Works offline
- Data collected at the farm and in **real-time**
- **Eliminates** data quality issues
- Enables faster **decision making**
- **Real-time** monitoring
- Trend **analysis** at the individual and group levels



ESF - SOW MANAGEMENT

- This system is **precise, efficient** and **adaptable** to a wide range of needs and situations in a new or an old building.
- **Easy to use** for gilts and sows.
- **Entirely mechanical**, the ESF stall has no electrical component.
- **Automatic data acquisition** on an individual level allows producers to **know more** about each animal eats and how it grows.

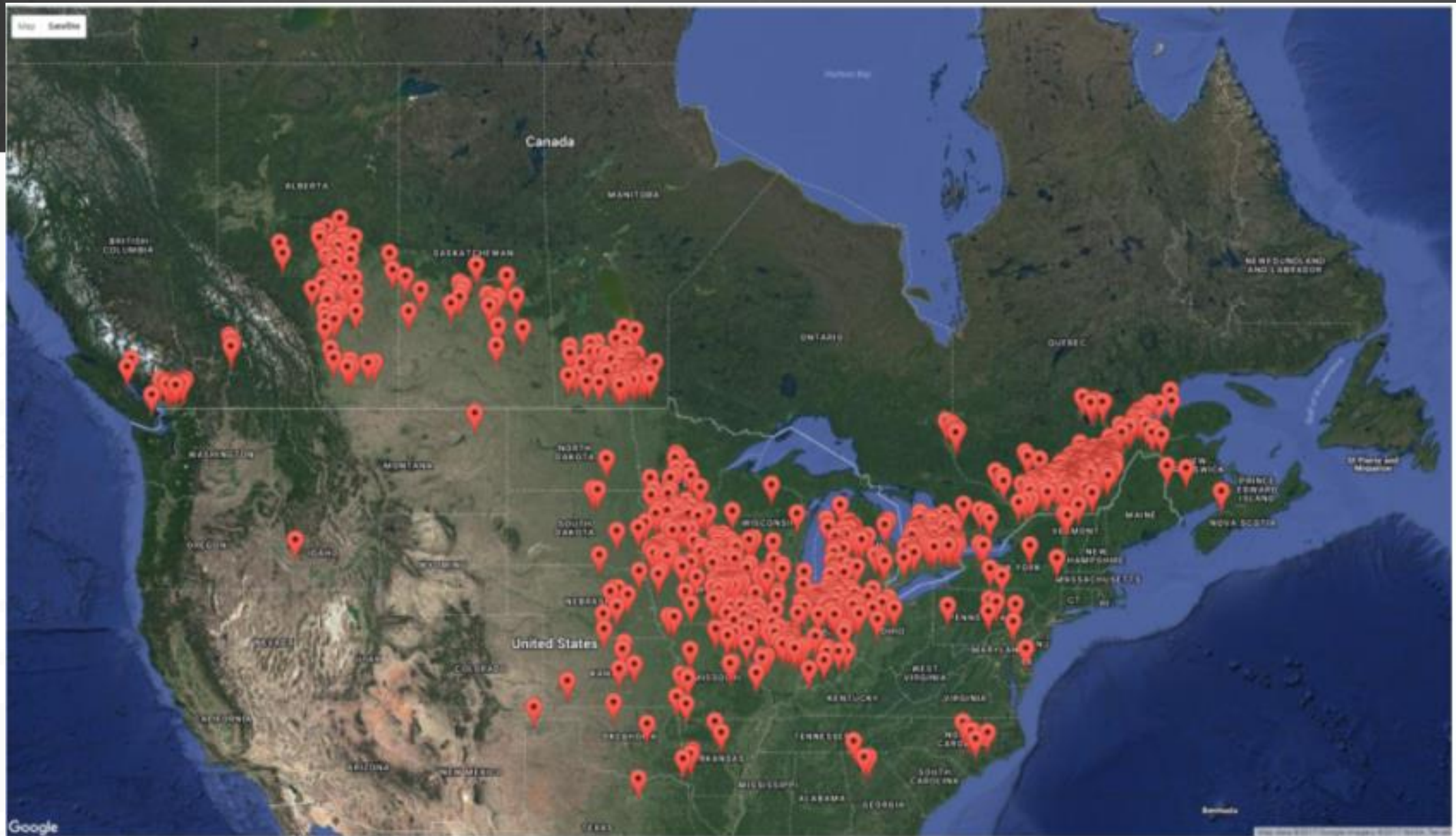
- **Small quantities** of feed at the time
- Agitator **activated** feeding
- **Efficient** feeding
- **Monitor** pig movement throughout the barn
- Ability to **adjust** individual sow feeding based on sow condition



WHY CHOOSE MAXIMUS?

- Access to **latest technology** – free updates
- The **quality** of its products
- 5 year **warranty**
- Capacity to directly **influence the evolution** of its products
- The strength of its overall package: **integrated system**
- Quality of **after-sales support**
- Our team's **experience** in the agricultural business







Ohio



Circle H Headquarters, LLC
Protecting, conserving & enhancing inputs surrounding animal health



Illinois



Iowa



Illinois



Indiana

QC SUPPLY.



MAXIMUS